

Torit® Radial Blade Fans

TRB-1, 2, 3, 5, 7.5, and 10 (60 and 50 Cycle)

Torit Radial Blade (TRB) Fans provide a convenient, cost-effective method of integrating a high efficiency fan with a Donaldson® Torit® dust collector.

- Mounts directly to the clean-air plenum of the dust collector.
 - Eliminating costly transition ducting
 - Reducing footprint of system
- Sizes range from 1 to 10 hp.
- Direct-drive operation eliminates maintenance of fan bearings and belts.
- Computer balanced fan and motor assembly ensures vibration-free operation.
- High temperature design operates up to 200°F/95°C.
- All necessary hardware for quick and easy installation is included.
- Aluminum fan wheel ensures compliance with safety regulations.
- Standard paint finish is blue.



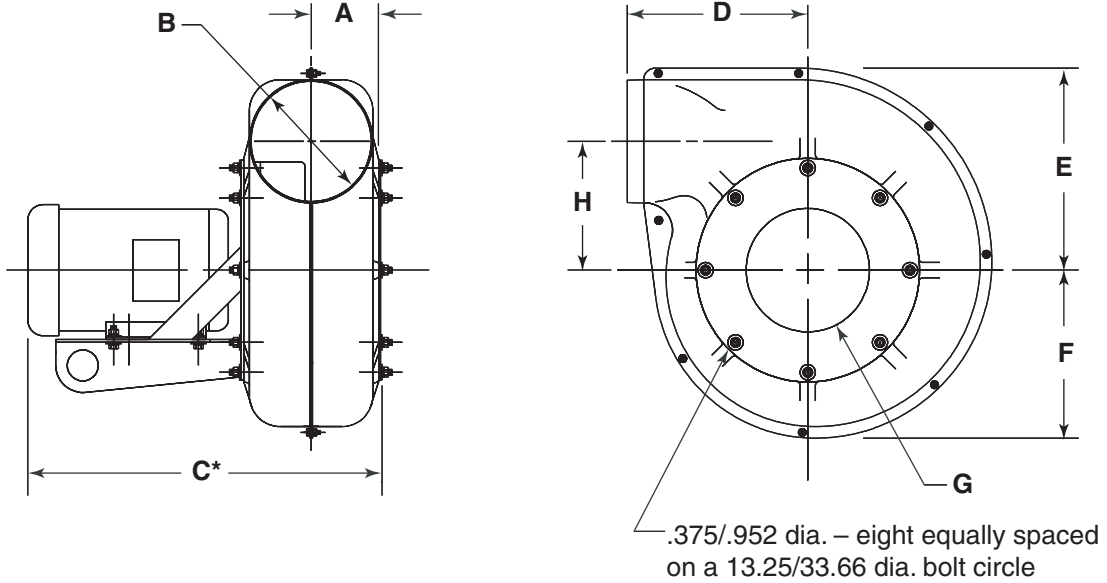
TRB-5 (60 Cycle)

Equipment Options

- Explosion-proof motors – NEMA
- Outlet dampers
- Chamber silencers
- 60 cycle NEMA or 50 cycle IEC motor configurations
- Outlet guards

Torit Radial Blade Fans

Dimensions & Specifications for 60 Cycle TRB Fan

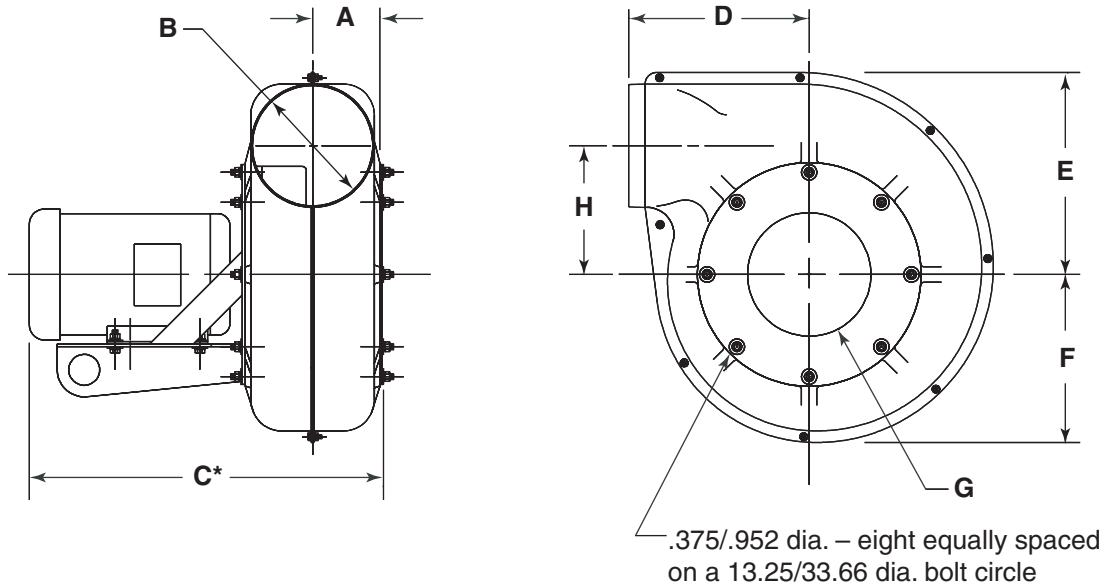


60 Cycle Fans	Dimensions																Shipping Weight	
	A		B		C*		D		E		F		G		H		(lbs)	(kg)
	(in)	(cm)	(in)	(cm)	(in)	(cm)	(in)	(cm)	(in)	(cm)	(in)	(cm)	(in)	(cm)	(in)	(cm)		
TRB-1	5.4	13.7	5.9	15.1	13.8	34.9	8.9	22.6	11.0	27.9	9.3	23.5	6.0	15.2	7.3	18.5	48	22
TRB-2	5.4	13.7	5.9	15.1	15.5	39.4	8.9	22.6	11.0	27.9	9.3	23.5	7.0	17.8	7.3	18.5	63	29
TRB-3	4.4	11.1	7.9	20.2	17.4	44.3	11.7	29.7	13.1	33.3	10.2	25.8	8.0	20.3	8.3	21.2	87	39
TRB-5	4.4	11.1	7.9	20.2	22.9	58.1	11.7	29.7	13.1	33.3	10.2	25.8	8.0	20.3	8.3	21.2	124	56
TRB-7.5	4.4	11.1	7.9	20.2	24.3	61.6	11.7	29.7	13.1	33.3	10.2	25.8	10.0	25.4	8.3	21.2	148	67
TRB-10	4.4	11.1	7.9	20.2	24.3	61.6	11.7	29.7	13.1	33.3	10.2	25.8	10.0	25.4	8.3	21.2	227	103

* This dimension is subject to change based on the motor manufacturer chosen and on the motor enclosure type (TEFC or EP). If this dimension is critical, you should verify the information with your sales representative.

Torit Radial Blade Fans

Dimensions & Specifications for 50 Cycle TRB Fan



50 Cycle Fans	Dimensions																Shipping Weight	
	A		B		C*		D		E		F		G		H		(lbs)	(kg)
	(in)	(cm)	(in)	(cm)	(in)	(cm)	(in)	(cm)	(in)	(cm)	(in)	(cm)	(in)	(cm)	(in)	(cm)		
TRB-1	5.4	13.7	5.9	15.1	15.3	38.5	8.9	22.6	11.0	27.9	9.3	23.5	7.0	17.8	7.3	18.5	63	29
TRB-2	4.4	11.1	7.9	20.2	19.1	48.9	11.7	29.7	13.1	33.3	10.2	25.8	6.0	15.2	8.3	21.2	88	40
TRB-3	4.4	11.1	7.9	20.2	20.1	51.0	11.7	29.7	13.1	33.3	10.2	25.8	10.0	25.4	8.3	21.2	100	45
TRB-5	4.4	11.1	7.9	20.2	22.2	56.4	11.7	29.7	13.1	33.3	10.2	25.8	10.0	25.4	8.3	21.2	158	72
TRB-7.5	4.4	11.1	7.9	20.2	23.7	60.3	11.7	29.7	13.1	33.3	10.2	25.8	10.0	25.4	8.3	21.2	205	93

* This dimension is subject to change based on the motor manufacturer chosen and on the motor enclosure type (TEFC or EP). If this dimension is critical, you should verify the information with your sales representative.

Torit Radial Blade Fans

60 Cycle TRB Fan Sound Data*

Model	Unsilenced ¹	Silenced ²
TRB-1	85	75
TRB-2	87	77
TRB-3	91	81
TRB-5	93	83
TRB-7.5	95	85
TRB-10	97	87

50 Cycle TRB Fan Sound Data*

Model	Unsilenced ¹	Silenced ²
TRB-1	85	75
TRB-2	89	79
TRB-3	92	82
TRB-5	94	84
TRB-7.5	96	86
TRB-10	N/A	N/A

- (1) Overall average dB(A) unsilenced fan at one meter.
- (2) Overall average dB(A) silenced fan at one meter. Allow 1"wg restriction for 1–3 hp fans and 2" for 5–10 hp fans.

* dB(A) sound levels are an average of measurements made in a laboratory environment. Installed sound levels will vary depending on the measurement location, operating conditions, and installation.



Donaldson

Filtration Solutions

Donaldson Company, Inc.
Industrial Air Filtration
P.O. Box 1299
Minneapolis, MN 55440
Tel 800-365-1331(USA)
Tel 800-343-3639 (within Mexico)
dustmktg@mail.donaldson.com
www.donaldsontorit.com

Significantly improve the performance of your collector with genuine Donaldson Torit replacement filters and parts.

Visit us at www.donaldsondynamic.com



Information in this document is subject to change without notice.

© 1998 Donaldson Co., Inc.
Printed in U.S.A. on recycled paper

Data Sheet TRB Fans (03/05)